



KING GROUP

Custom Metal Forming Solutions Since 1992



Company Profile & Production Capabilities

ABOUT US

- ISO 9001/IATF 16949 TUV Certified .
- Over 1200+ Employees, 50+ certified engineers.
- Customer Base in 80 Countries (Including USA, Germany & Japan).
- Six Manufacturing facilities measuring over 605,000 sq. ft in India.
- Lean Manufacturing System
- Private Family Ownership & manufacturing since 1992.
- Supply chain: 32 vendors of whom 20 are ISO certified & TS Certified.
- Patent pending with USTPO & 100% Export Oriented Units (EOU).



AWARDS

- Export Excellence -1998 (Engineering Goods) Ministry of Commerce Government of India 
- Export Excellence -2002 (Engineering Goods) Ministry of Commerce Government of India 
- Highest Exports - 2006 (SSI-Sector) Export Promotion Council Government of India **EPC-INDIA**
- Export Excellence - 2010 (Engineering Goods) Ministry of Commerce Government of India 
- Award of Honour - 2014 (Medium Enterprise) Dainik Bhaskar largest selling Newspaper 
- Best Exporter - 2018 (Medium Enterprise) Export Promotion Council Government of India **EPC-INDIA**
- Emerging SME -2018 Award from CNBC. 
- Awards of Manufacturing Excellence - 2019 Punjab State Governor 

WHY IMPORT FROM INDIA

- **Low-cost labor force**

Indian's manufacturing wages are among the lowest worldwide.

- **Demographic dividend**

Indian abundant labor force is English-speaking, young, skilled, and cost-efficient.

- **Currency**

The rupee's falling value against the dollar makes indian exports increasingly competitive as the yuan continues to rise in value.

- **Raw Material**

India is second largest producer of steel in the world

- **Free Trade Agreements**

Free trade agreements with many countries, preferred partner for USA & EU.

- **Developed Manufacturing HUB**

State of the art engineering factories catering to high- tech sectors like Automotive, Medical, Space etc.

OUR UNITS



KING EXPORTS
UNIT NO-1



KING EXPORTS
UNIT NO-2



KING EXPORTS
UNIT NO-3



KING EXPORTS
UNIT NO-4



KING INDUSTRIES
UNIT NO-5



**KING INTERNATIONAL/
SUSHIL INDUSTRIES**
UNIT NO-6

PRODUCT RANGE (IN-HOUSE MANUFACTURING)



Drop Forgings



CNC Machined Parts



Thread Rolled Parts



Stampings



Tube Forming Parts



Welding & Assemblies

PRODUCTION FACILITIES



VMC MACHINING (7 No.s)

- Bed Size : 600mm (23.62") x 400mm (15.75") x 400mm (15.75")
- Carbon, Alloy & Stainless Steel



DROP FORGINGS (1 Ton, 1.5 Ton)

- Range: 0.2Kg. (0.44 lbs) to 4.5Kg (9.92 lbs)
- Carbon & Alloy steel



PRODUCTION FACILITIES



CNC MACHINING (42 No.s)

- Range: Dia. upto 200mm (7.87") Length upto 500mm
- Carbon, Alloy & Stainless Steel



PRODUCTION FACILITIES



HYDRAULIC PRESSES (12 No.s)

- Range: upto 300 Tons
- Carbon, Alloy & Stainless Steel

PRODUCTION FACILITIES



STAMPING SHOP

- Range : Bed sizes upto 275mm (10.83") x 300mm (11.81")
- Mechanical Presses (30 No.s, Capacity upto 250 Tons)
- Stamping Shapes - Rounds, Spines, Tangs, and ears to no limitations.
- Progressive Die Stamping
- Carbon, Alloy & Stainless Steel



PRODUCTION FACILITIES



GAS WELDING (11 No.s)



ARC WELDING (12 No.s)



MIG WELDING/ROBOTIC (12 No.s)

- As per Standard DIN 18800-7 or AWS D1.1
- Using wire from 0.82 mm (0.032") to 1.4 mm (0.055")
- Robotic Weldings
- Certified Welding Engineers
- Carbon Steel, Alloy Steel & Stainless Steel



TIG WELDING (12 No.s)

PRODUCTION FACILITIES



DRILLING MACHINES (20 No.s)

- Range: 3 mm (0.12") to 40 mm (1.57")



THREAD ROLLINGS MACHINES (8 No.s)

- Range : M16 to M42
- Carbon, Alloy & Stainless Steel



TAPPING MACHINES (5 No.s)

- Range : M16 to M42
- Carbon, Alloy & Stainless Steel

PRODUCTION FACILITIES



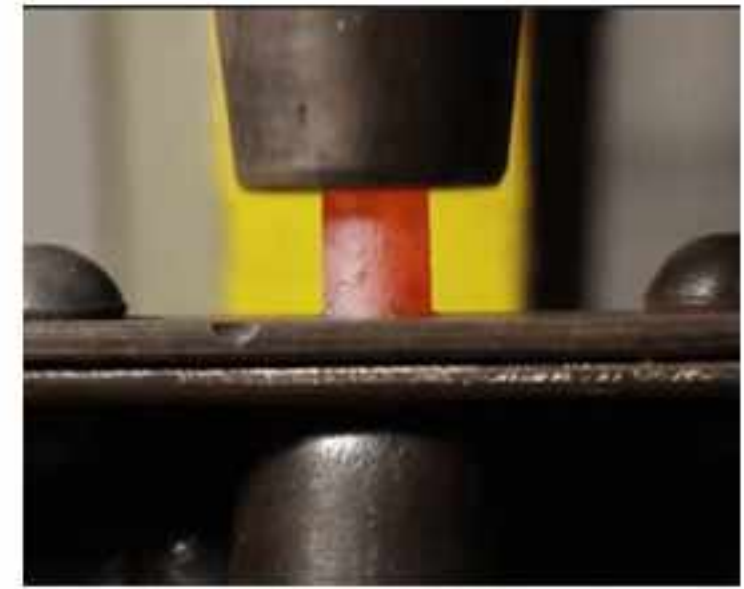
**AUTOMATIC CUTTING
MACHINES (2 No.s)**

- Carbon, Alloy, Aluminium & Stainless Steel



**WIRE CUT EDM MACHINES
(2 No.s)**

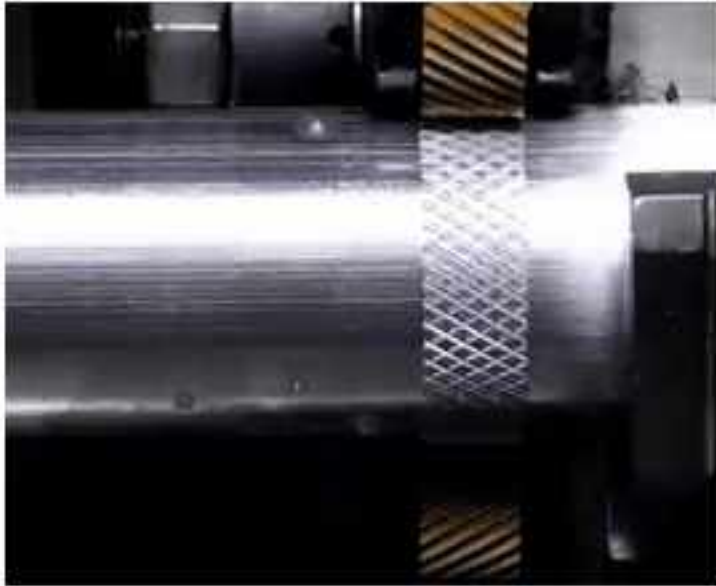
- Carbon, Alloy, Aluminium & Stainless Steel



RIVETING (8 No.s)

- Carbon, Alloy, Aluminium & Stainless Steel

PRODUCTION FACILITIES



KNURLING (5 No.s)

- Carbon, Alloy, Aluminium & Stainless Steel



**CENTERLESS GRINDING
(3 No.s)**

- Carbon, Alloy, Aluminium & Stainless Steel



BUFFING (15 No.s)

- Carbon, Alloy, Aluminium & Stainless Steel

PRODUCTION FACILITIES

FINISHING

- Powder Coating Shop
- Electro Plating
- Passivated Coating (Trivalent, Hexavalent)
- Hot Dip Galvanization (As per standard ASTM 123)
- Stainless Steel Shot Blasting
- Electro Polishing



TREATMENT

- Hardening & Tempering
- Annealing
- Normalizing
- Forced Draught
- Bottom Drop Hardening
- Gas Carburizing

PRODUCTION FACILITIES



Metal Marking Machine (3No.s)

- Carbon, Alloy, Aluminium & Stainless Steel



Clean Room Assembly

All our hydraulic components are assembled in a clean room environment to meet ISO 19/17/14 cleanliness standards.



TOOL ROOM FACILITIES



LATHE



SURFACE GRINDER



CIRCULAR SAW



PEDESTAL GRINDING

Activities Performed

- In house Manufacturing of SPM's
- In house Manufacturing of Gauges
- In house Manufacturing of Special Tools



WIRE CUT EDM

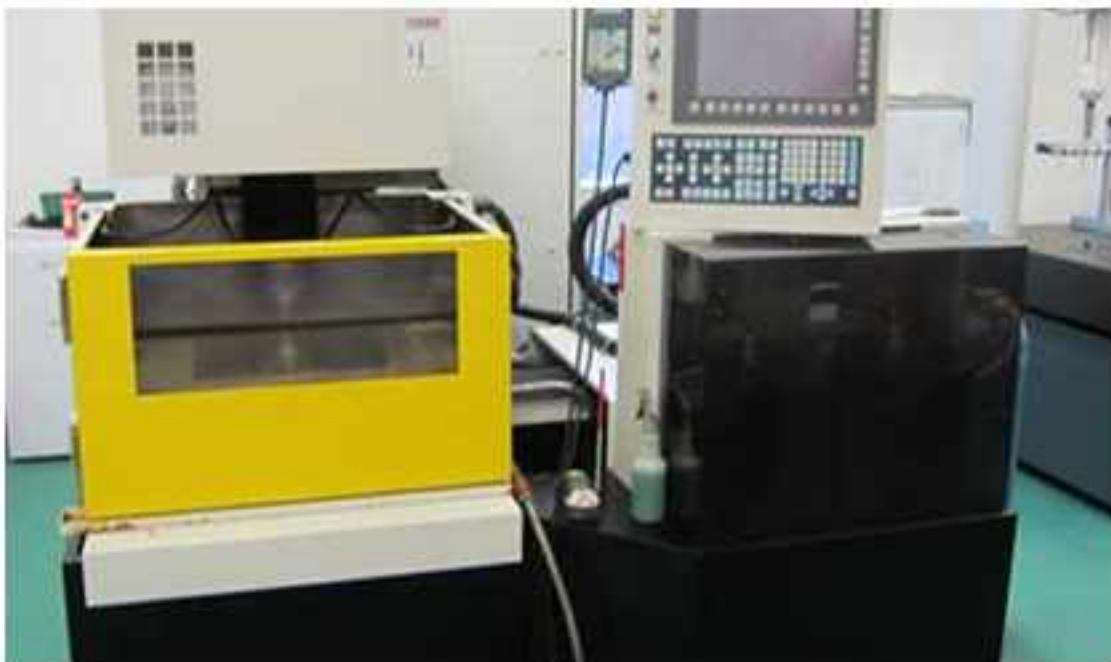
TOOL ROOM FACILITIES



- In-house Tool Design team & Tool Manufacturing facility
- Monitored by a cross-functional APQP team
- Supported by FMEA/MSA/SPC activities



TOOL ROOM FACILITIES



IN-HOUSE TESTING FACILITIES



We are IATF 16949 : 2016 Certified. Apart from testing our products in our world-class in-house testing facilities we also have independent testing partner Stork Laboratories, Iowa, USA for certifications.

- Brinell & Rockwell Hardness Tester
- Profile Projector
- Surface Plate(600 mm (23.62") X 600 mm (23.62"))
- Height Gauge (600 mm) (23.62")
- Salt Spray Testing Machine
- Dial Bore & Attribute Type Gauges



IN-HOUSE TESTING FACILITIES



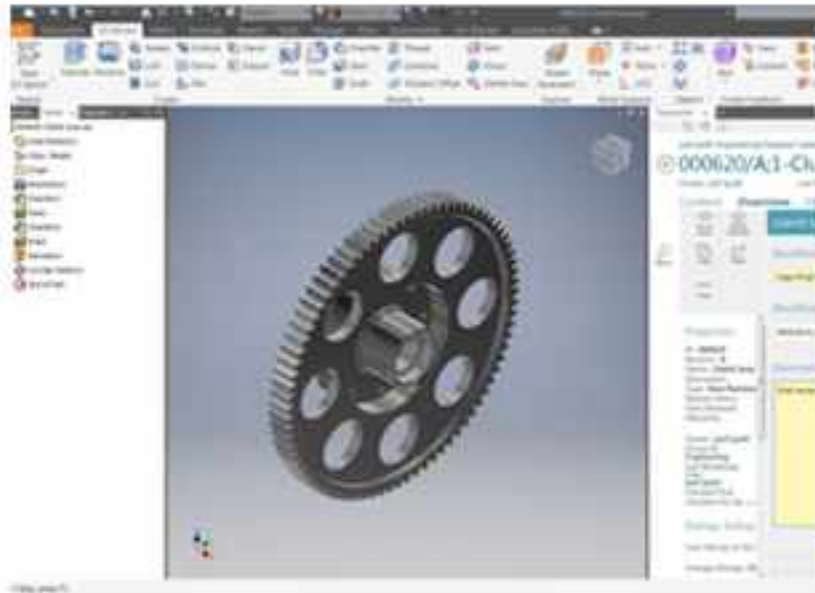
- Wet Analysis
- Astro Helien Apparatus
- Hot Plate
- Muffle Furnace
- Universal Testing Machine
- Bust Test Machine
- Magnetic Particle Inspection
- Hydraulic Test
- Vernier Caliper
- Micro Meter

PACKAGING

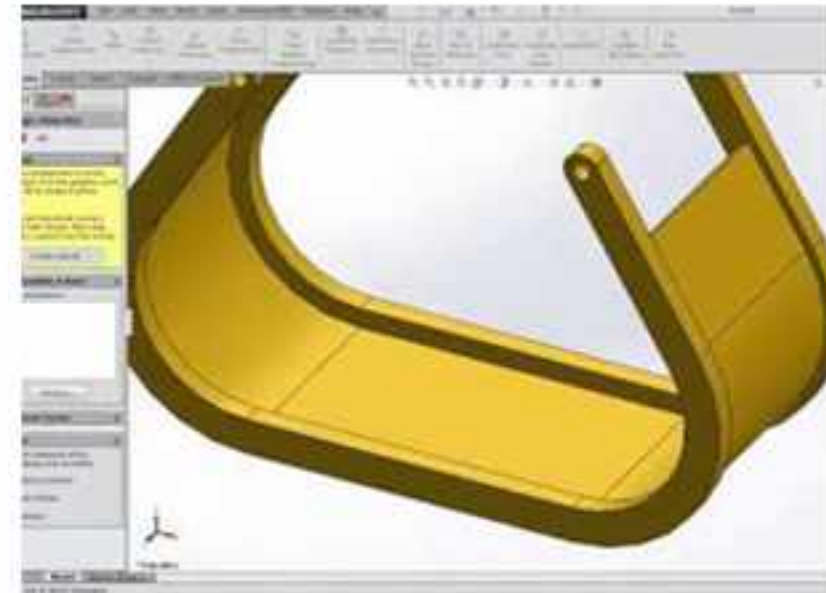
- Universal Pallets
- Card Board Cartons
- PPE Bags
- Fumigation Pallets (as per ISPM 15)
- Litho Cartons
- Bar Coding
- Label Scanning
- Full Range of Graphics
- Laser Engraving
- Customised Packing



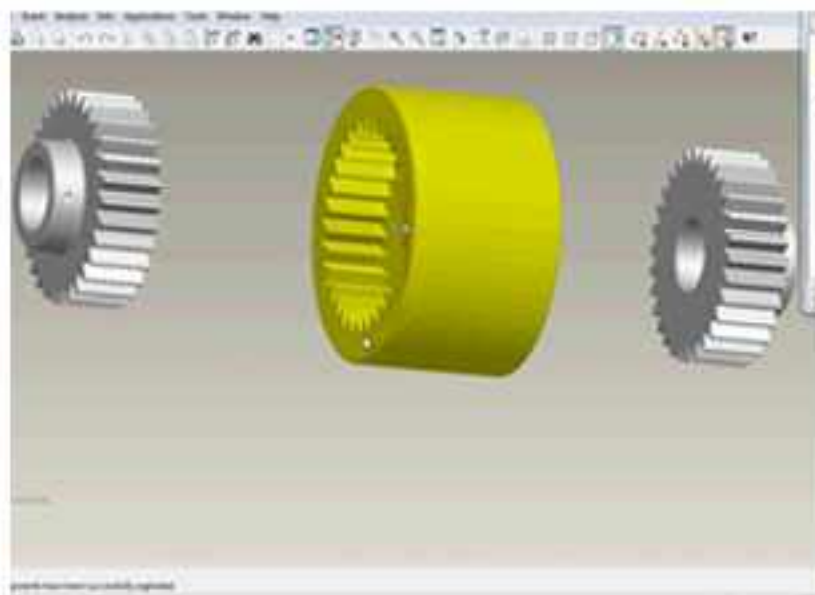
DESIGN CAPABILITES



AUTO CAD



SOLID WORKS



PRO E



REVERSE ENGINEERING

LEAN MANUFACTURING



Cellular Manufacturing

By colocating traditional workcenters within a Manufacturing Cell, we have been able to make dramatic improvements to our flexibility. This flexibility has benefited our customers on numerous levels



JIT and Kanbans Programs

Just in time manufacturing and Kanbans programs are a key component of Lean manufacturing and flexible Cellular Manufacturing. From vendor delivery programs for raw stock and components to customer Kanban programs, King Group strives to create a complete system from start to finish.

CORPORATE SOCIAL RESPONSIBILITY (CSR)





King Group (Head Office)

Village Kanech, G.T. Road

Near Sahnewal,

INDIA - 141120

 www.kinggroup.in

 info@kinggroup.in

 +91 8837864491

 [king.industries](https://www.facebook.com/kingindustries)

 [King Group-INDIA](https://www.linkedin.com/company/king-group-india)

 +91-98150-00647