

KING GROUP

Custom Metal Forming Solutions Since 1992



Company Profile & Production Capabilities

About Us

- IATF 16949: 2016/ISO 9001:2015 Certified from TUV-Nord.
- ISO 14001, ISO 45001 & CTPAT certified.
- 1200+ associates and 50+ certified engineers.
- Customer base in 80 countries, including USA & Germany.
- Six manufacturing facilities covering an area of 605,000 sq. ft.
- Lean Manufacturing.
- Meet REACH, RoHS and Proposition 65 standards.
- Focus on integrating industry 4.0 Automation.
- Private family ownership since 1992.
- Registered sales company in the USA.
- Good financial strength and a robust cash flow.
- Manufacturing system controlled Centrally by Oracle ERP.



Meet Our Team



GAURAV GOEL

PARTNER

Gaurav holds a Bachelor's degree in Accounting from Panjab University and an International Trade Diploma from CBI-Netherlands. Additionally, he has pursued an MBA in International Business from California State University, USA. With a remarkable professional journey spanning over 17+ years, Gaurav has garnered extensive expertise in the field of Engineering goods. His career has taken him to more than 60 countries worldwide, reflecting his broad global exposure and travel experience.



SAURABH GOEL

PARTNER

Saurabh has a degree in Business Administration from Pune University, India, and a master's degree in Business Administration and Finance from Fore School of Management, India, where he specialized in International Marketing. With a rich professional experience of over 12+ years in the field of Engineering goods, Saurabh has gained valuable insights and expertise. He has also had the opportunity to travel extensively to more than 40 countries worldwide, further enhancing his global exposure and understanding.



AJAYWINDER SINGH

PARTNER

Ajay has completed his bachelors in mechanical engineering from Thapar University, India and has a Study cum exchange experience in Germany of 1 year. With Over 6+ years' of work experience in various industrial sectors in Automobile parts (special focus on Forgings, Stampings & CNC machining) and Engineering domain, and with a well-travelled portfolio of 20+ countries, he has broadened his horizon to become more inclined towards sector specific client requirements.

Our Units



King
Exports
Unit - 1



King
Exports
Unit - 2



King
Exports
Unit - 3



King
Exports
Unit - 4



King
Industries
Unit - 5



King International /
Sushil Industries
Unit - 6

Solutions

1200+
Employees

33
Years Manufacturing Experience

80+
Countries

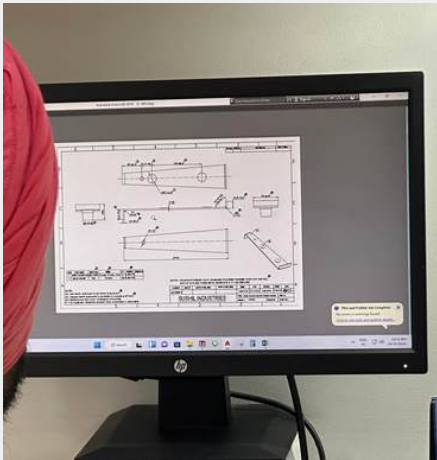
250K
Square Feet Manufacturing Space

6
Inhouse Manufacturing Units

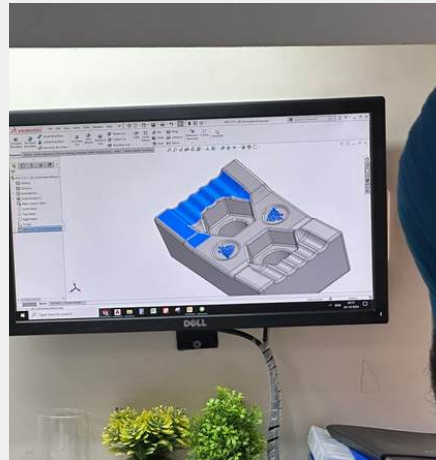
3 Million +
Parts Produced / Each Year



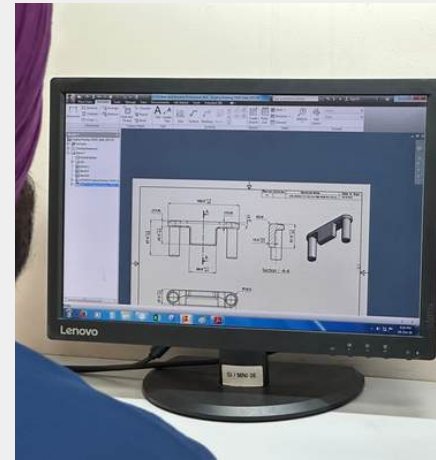
Design / Engineering



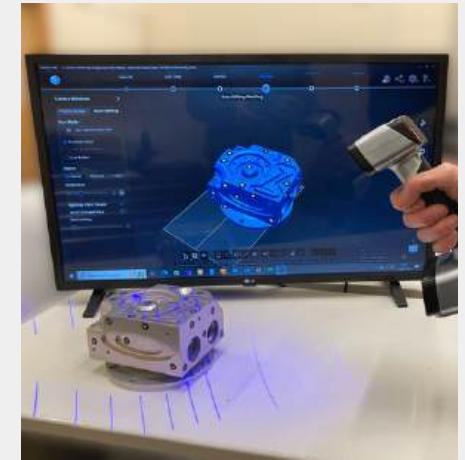
AUTO CAD



SOLID WORKS



INVENTOR



REVERSE ENGINEERING

Forging



Drop Forging Hammers- 5 machines

- Forging Range: 0.2Kg. (0.44 lbs) to 5Kg (11.02 lbs)
- Electric furnaces
- Shot Blasting process
- Heat treatment Process
- Magnetic particle inspection

Materials: Carbon, Alloy & Stainless steel

Products: Towing hooks, Linkage parts, Chain links, Balls, Lifting parts



Stamping / Press Break



Mechanical Presses-30 Machines
Press Break- 1 Machine

- Range: Bed sizes upto 275mm (10.83") x 300mm (11.81")
- Capacity: upto 250 TONS
- Progressive tooling setup

Materials: Carbon, Alloy, Aluminum & Stainless Steel

Products: Fall protection, Roofing hooks, Trailer parts, Food processing



Machining



VMC - 12 Machines
CNC - 42 Machines

- VMC Bed Size: 600mm (23.62") x 400mm (15.75") x 400 (15.75")
- CNC Range: Dia up to 200mm (7.87"), Length up to 500mm (19.69")

Materials: Carbon, Alloy, Aluminium & Stainless Steel

Products: Couplers, Rapid Hooks, Lower Link, Knuckle Housing, Towing Product



Welding



Robotic welding -5 Machines
Manual Welding-30 Machines

- Types: Mig, Tig, Spot, Projection, Laser welding
- TUV certified welding engineers
- As per Standard DIN18800-7 or AWS D1.1

Materials: Aluminum, carbon steel and stainless steel

Products: Hydraulic cylinders, Towing hitch, Couplers, Defense, Food processing



Hydraulic Swaging



Swaging SPM: 12 Machines

- Range : Upto 300 Tons

Materials: Carbon, Alloy, Aluminium & Stainless Steel

Products : Eye Bolts, Hitch pins, Top links, Ball Fittings



Supporting Operations



Drilling - 20 Machines



Thread Rolling - 25 Machines



Tapping - 20 Machines

Supporting Operations



Automatic Cutting - 2 Machines

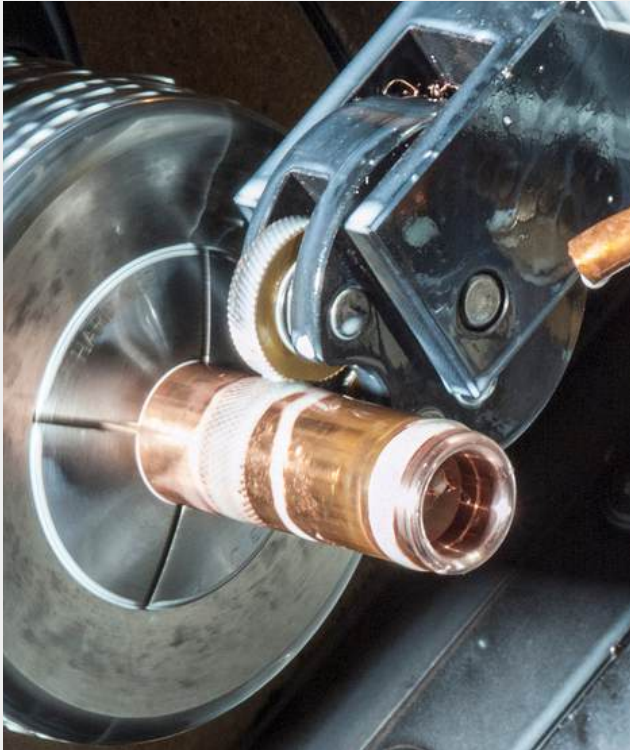


Wirecut EDM - 2 Machines



Riveting - 8 Machines

Supporting Operations



Knurling - 5 Machines

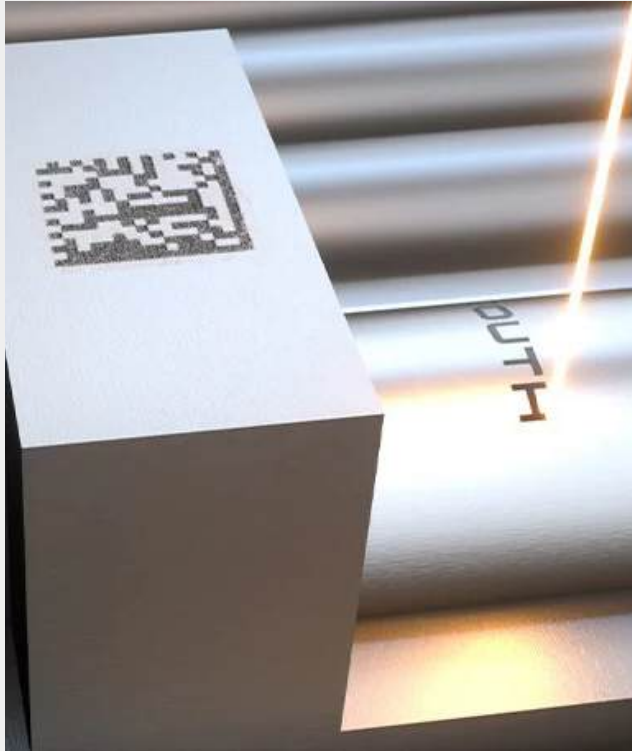


Centerless Grinding - 3 Machines



Buffing - 15 Machines

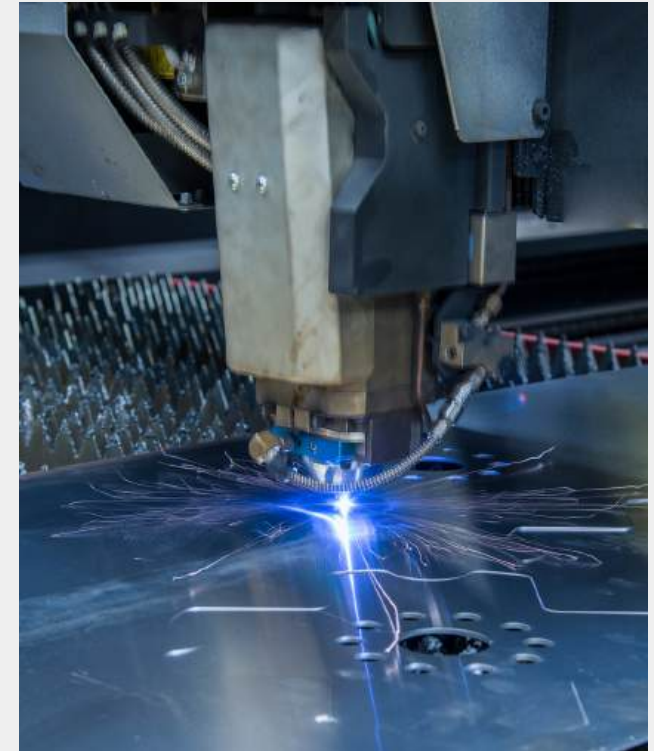
Supporting Operations



Laser & Metal Marking - 3 Machines



Ultrasonic Cleaning



Laser Cutting - 1 Machine

Supporting Operations



Pipe Bending



Broaching

Supporting Operations



Finishing

- Powder Coating Shop
- Paint Coating Shop
- Electro Plating
- Passivated Coating (Trivalent, Hexavalent)
- Hot Dip Galvanization (As per Standard ASTM 123)
- Carbon / Stainless Steel Shot Blasting
- Electro Polishing
- Anodizing



Supporting Operations



Treatment

- Hardening & Tempering
- Annealing
- Normalizing
- Forced Draught
- Bottom Drop Hardening
- Gas Carburizing



Supporting Operations



Assembly

Components are assembled in a clean room environment

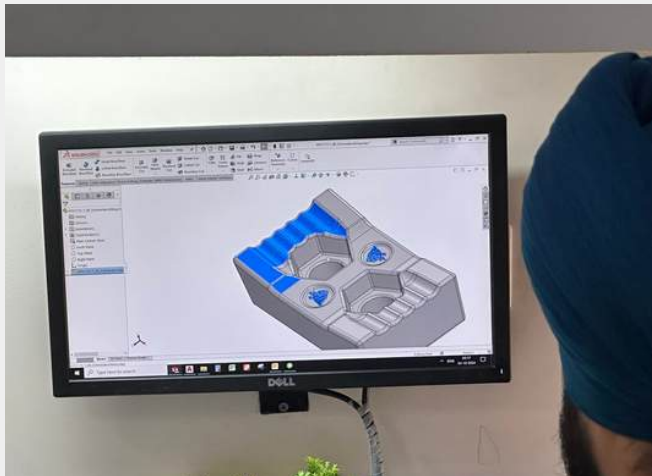
Packaging



- Universal Pallets
- Card Board Cartons
- PPE Bags
- Fumigation Pallets (as per ISPM 15)
- Litho Cartons
- Bar Coding
- Label Scanning
- Full Range of Graphics
- Laser Engraving
- Customised Packing



Tool Room Facilities



Tool Design



Manufacturing of Tools



Manufacturing of Gauges

Tool Room Facilities



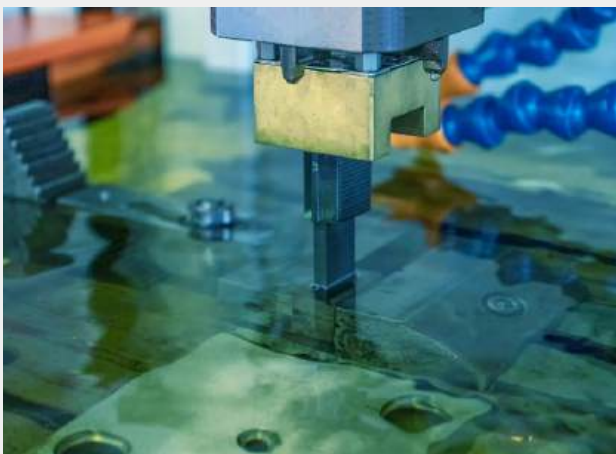
Lathe



Surface Grinder



VMC Tooling Machine



Wire Cut EDM



Pedestal Grinding



Circular Saw

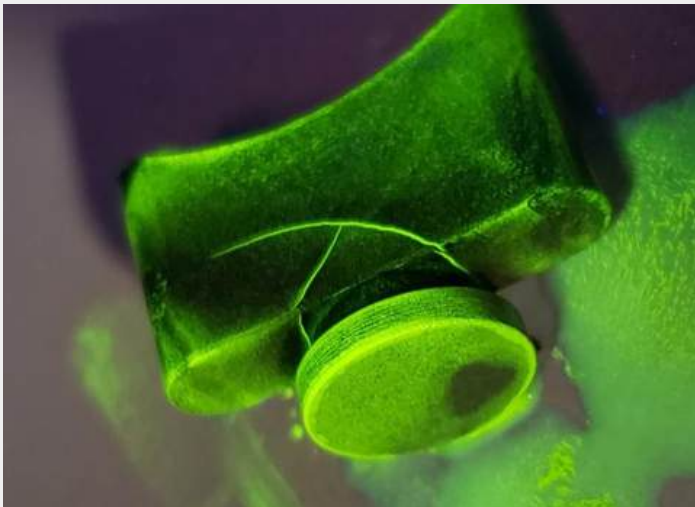
Quality / Testing Facilities



Apart from testing our products in our testing facilities we also have testing partner Stork Laboratories, Iowa, USA.

- Brinall & Rockwell Hardness Tester
- Profile Projector
- Surface Plate (600mm (23.62") x 600mm (23.62"))
- Height Gauge (600mm) (23.62")
- Salt Spray Testing Machine
- Dial Bore & Attribute Type Gauges

Quality / Testing Facilities



- Wet Analysis
- Astro Helien Apparatus
- Hot Plate
- Muffle Furnace
- Universal Testing Machine
- Bust Test Machine
- Magnetic Particle Inspection
- Hydraulic Test
- Vernier Caliper
- Micro Meter

End To End Solution



Engineering

Enhancing and improving designs for 32+ years.



In-House Manufacturing

Stamping, CNC Machining, Forging, Metal Fabrication, and more.



Quality

Ensuring every product meets the standards of our clients



Logistics

Factory to warehouse transport, including shipping, customs, and delivery

Corporate Social Responsibility



Sponsoring Education For Poor Children Since 2012



Computers Donation Year 2017



Rainwater Harvesting Since 2015



Plantation Drive Year 2020 at King Group



**Questions ? Comments ?
We'd love to hear from you.**

KING GROUP (Head Office)

Village Kanech, G.T. Road,
Near Sahnewal,
INDIA - 141120
www.kinggroup.in
info@kinggroup.in / +91-8837864491

Our Values HEART ❤️
Honesty
Excellence
Accountability
Respect & Teamwork

